

The
Amari
GARDENS, EPE

! Your Grand Partenaire !

**PRODUCT
PRESENTATION**

Buy & Build



About Us

We focus on providing world class estate development and management with flexible financing solutions for the purpose of delivering quality housing and infrastructure in various forms within the shortest period.

Our clients include individuals, cooperative societies, government institutions and private companies.



Location

The Amari Gardens is located in Epe at igbonla community. it's a 4 minutes drive from St. Augustine University.

Enjoy the calmness of the rich green nature and create your happy memories in the comfort of your tastefully designed and built homes. Own the future, Feel the serenity of Lagos in Epe



Why Should I Buy

- Excellent eco-friendly Facilities
- Prime Location
- Good return on investment
- Habitable and serene.
- State-of-the-art infrastructure
- Free from the cluster of busy neighborhood.



Neighborhood

- Epe Resort & Spa
- St. Augustine University
- Blueroof Hotel & Bars
- St. Michaels Anglican Church
- Emma Style Salon
- Epe Primary healthcare Center



Documents

Deed of Assignment



www.theamari.com



Payment Option

	OUTRIGHT	12 MONTHS
300 SQM	N 700,000	N 850,000
600 SQM	N 1,200,000	N 1,500,000



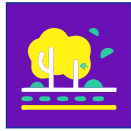
Infrastruture



Perimeter Fence



Access Road



Green Area



Power



Security



Street Light

The
Amari
GARDENS, EPE
Your Grand Partenaire

www.theamari.com



